

Specs.

DIMENSIONS & CAPACITIES

Exterior (4x2/4x4)	Expedition	EL
Wheelbase	119.0"	131.0"
Length	206.5"	221.3"
Height (with options)	77.2"	77.7"/78.3"
Width – Excluding mirrors	78.8"	78.8"
Width – Including mirrors	91.8"	91.8"
Width – Mirrors folded	79.7"	79.7"
Minimum running ground clearance	8.7"	8.7"
Liftover height	34.4"	35.3"/35.9"
Overhang – Front	39.2"	39.2"
Overhang – Rear	48.3"	51.1"
Ramp breakover angle	18.4°/18.3°	17.6°/18.7°
Angle of approach	22.8°/22.6°	23.1°/24.1°
Angle of departure	21.4°/21.5°	20.1°/20.9°

Interior

1st Row

Head room	39.6"	39.5"
Shoulder room	63.2"	63.2"
Hip room	60.2"	60.2"
Leg room	41.1"	41.1"

2nd Row

Head room	39.8"	39.7"
Shoulder room	63.7"	63.7"
Hip room	59.9"	59.9"
Leg room	39.1"	39.1"

3rd Row (if equipped)

Head room	38.3"	38.0"
Shoulder room	51.9"	67.1"
Hip room	50.2"	51.8"
Leg room	37.7"	37.7"

Cargo Volume (cu. ft.)

Maximum cargo volume	108.3	130.8
Behind 2nd row	55.0	85.5
Behind 3rd row	18.6	42.6

Maximum Loaded Trailer Weight (lbs.)¹

3.31 Axle Ratio		
4x2 Class IV	9200	—
4x4 Class IV	9000	—

3.73 Axle Ratio

4x2 Class IV	9200	8900
4x4 Class IV	9000	8700

Dimensions may vary by trim level.

STANDARD

Mechanical

5.4L 3-valve V8 FFV engine produces 310 hp @ 5100 rpm and 365 lb.-ft. of torque @ 3600 rpm
6-speed automatic transmission with Tow/Haul mode
4-wheel independent suspension with coil-over shocks – Front: double-wishbone, Short- and Long-Arm (SLA) design; rear: multilink design
4-wheel power disc brakes with Anti-lock Brake System (ABS), Brake Assist and Electronic Brakeforce Distribution (EBD)
28-gallon fuel tank capacity (33.5-gallon on Expedition EL)
Easy Fuel™ capless fuel filler
Front skid plates (4x2 only)
Full-size spare tire
Non-limited-slip rear axle – 3.31 ratio (Expedition only); 3.73 ratio (Expedition EL only)
Variable-assist, power rack-and-pinion steering

Safety & Security

Personal Safety System™ for driver and front passenger includes dual-stage front airbags ² , safety belt pretensioners, safety belt energy-management retractors, safety belt usage sensors, driver-seat position sensor, crash severity sensor and restraint control module
3-point safety belts for all seating positions
AdvanceTrac® with RSC® (Roll Stability Control™)
Belt-Minder® front safety belt reminder
Child-safety rear door locks
Front-seat side airbags ²
Height-adjustable shoulder belts for 1st-row outboard positions
LATCH – Lower anchors and tether anchors for child-safety seats on rear-outboard seat positions
MyKey™ owner controls feature
Perimeter alarm
Safety Canopy® System with 3-row side-curtain airbags ² and rollover sensor
SecuriCode™ keyless-entry keypad
SecuriLock® passive anti-theft ignition system
Side-intrusion door beams
SOS Post-Crash Alert System™ flashes hazard lights and sounds horn after airbag deployment or safety belt pretensioner activation in certain collisions
Tire Pressure Monitoring System (excludes spare)
Trailer Sway Control

HORSEPOWER, TORQUE & FUEL ECONOMY³

5.4L 3V V8 FFV Engine

Horsepower	310 @ 5100 rpm
Torque (lb.-ft.)	365 @ 3600 rpm
6-speed automatic (4x2)	14 mpg city/20 hwy.

EXPEDITION & EXPEDITION EL



Interior

Air conditioning
Assist handles (2 in 1st row and 2 in 2nd row)
Auto-dimming rearview mirror
Auxiliary audio input jack
Auxiliary rear air conditioning and heat
Cargo organizer (Expedition EL only)
Carpeted floor mats in 1st and 2nd rows
Cruise control
Cupholders (9)
Dual-blade sun visors with illuminated vanity mirrors
Floor console with storage bin, coin holder, 2 headphone jacks, 4 cupholders, 2 power points, auxiliary rear audio and climate controls, and pen holder
Front door-trim panels with map pockets and cupholders (up to 20-ounce bottles)
Instrumentation (analog) with voltmeter, speedometer/odometer, tachometer, and oil pressure, water temperature and fuel gauges
Leather-wrapped steering wheel
Overhead console with map lights, single sunglasses holder and conversation mirror (plus rear quarter window switches, if equipped)
Power door locks
Power points (3)
Power windows with one-touch-up/-down driver-window feature
Rear floor air vents
Tilt steering column

Seating

1st-row bucket seats
2nd-row 40/20/40 split seat with CenterSlide® (slide-forward feature for center section) reclines and folds flat to floor in Cargo Mode

Exterior

Automatic headlamps with rainlamp function
Chrome door handles
Class IV Trailer Tow receiver with 4-pin connector
Complex-reflector system headlamps (integrated park/turn-signal indicators)
Concealed antenna in rear quarter glass
Fog lamps
Front tow hooks (4x4 only)
Liftgate with flip-up glass
Privacy glass (rear doors, rear quarter windows and rear window)
Rear-window defroster
Windshield wipers – Front: speed-sensitive, 2-speed variable-intermittent; rear: intermittent with washer

¹Maximum weights shown are for properly equipped vehicles with required equipment and a 150-lb. driver. Weight of additional options, equipment, passengers and cargo must be deducted from this weight. For additional information, see your Ford Dealer. Cargo and load capacity limited by weight and weight distribution. ²Always wear your safety belt and secure children in the rear seat. ³2009 EPA-estimated fuel economy.

EXPEDITION & EXPEDITION EL

2010



EXPEDITION XLT

Equipped with all standard features, plus:

Rapid Spec 100A:

17" aluminum wheels
 Body-color lower bodyside moldings, wheel-lip moldings and bumpers
 Black roof side rails with crossbars
 Chrome grille
 Black running boards
 Black, power, heated sideview mirrors with security approach lamps and manual fold-away design
 AM/FM stereo and single-CD player
 6-way power driver seat with manual lumbar
 3rd-row 60/40 split fold-flat-to-floor bench seat (Expedition EL only)

Available Option Groups

Rapid Spec 101A: XLT Convenience Package: AM/FM premium stereo and 6-disc in-dash CD changer (160 watts), power-adjustable pedals, power rear quarter windows, Universal Garage Door Opener and Reverse Sensing System with message center + 3rd-row 60/40 split bench seat + SIRIUS Satellite Radio

Rapid Spec 102A: XLT Convenience Package + 3rd-row manual seat + SIRIUS Satellite Radio + Ford SYNC® voice-activated, in-vehicle communications and entertainment system + 18" bright machined-aluminum wheels

Available Options & Packages

3.73 non-limited slip rear axle (non-EL only)^{1,2}
 3rd-row 60/40 split fold-flat-to-floor bench seat (Available on non-EL)
 Control Trac® 4-wheel-drive (4WD) system
 Daytime running lamps
 Ford SYNC

Heavy-Duty Trailer Tow Package: Class IV hitch receiver, 4- and 7-pin connectors, heavy-duty auxiliary transmission oil cooler, heavy-duty radiator and electronic brake wiring kit
 Leather-trimmed 1st- and 2nd-row seats, with 10-way power driver seat including power lumbar, and front-passenger seat with manual lumbar; vinyl PowerFold® 3rd-row seat³
 Power moonroof with mini-overhead console³
 P265/70R17 OWL tires (4x2 only)⁴
 Rear-Seat DVD Entertainment System³
 All-weather floor mats in 1st and 2nd rows
 SIRIUS Satellite Radio with 6-month subscription



EXPEDITION EDDIE BAUER®

Equipped with all standard XLT features, plus:

Rapid Spec 200A:

18" machined-aluminum wheels
 Chrome exhaust tip
 Pueblo Gold lower bodyside moldings, wheel-lip moldings, bumpers and running boards
 Black, power, heated sideview mirrors with memory, security approach lamps and integrated turn signals
 Reverse Sensing System
 Leather-trimmed 1st- and 2nd-row seats
 10-way power driver seat with memory feature
 PowerFold 3rd-row seat
 Dual-zone Electronic Automatic Temperature Control
 Leather-wrapped steering wheel with secondary audio controls
 Power-adjustable pedals with memory
 Premium Sound System with 6-disc in-dash CD changer and 7 speakers (including a subwoofer) with 340 watts
 SIRIUS Satellite Radio
 Ford SYNC

Available Option Groups

Rapid Spec 201A: Eddie Bauer Convenience Package: rain-sensing windshield wipers, Rear View Camera, power rear quarter windows, power liftgate and Universal Garage Door Opener + **Heavy-Duty Trailer Tow Package**

Rapid Spec 202A: Eddie Bauer Convenience Package + Heavy-Duty Trailer Tow Package + Rear-Seat DVD Entertainment System + heated and cooled front seats

Rapid Spec 203A: Eddie Bauer Convenience Package + Heavy-Duty Trailer Tow Package + Rear-Seat DVD Entertainment System + heated and cooled front seats + power moonroof + Navigation System

Available Options & Packages

Air suspension with rear load leveling and message center⁵
 20" chrome-clad aluminum wheels⁶
 3.73 non-limited slip rear axle (non-EL only)¹
 2nd-row bucket seats with same trim as 1st-row seats⁶
 All-weather floor mats in 1st and 2nd rows
 Control Trac 4-wheel-drive (4WD) system
 Daytime running lamps
 Heated and cooled front seats with 6-way power passenger seat⁷
Heavy-Duty Trailer Tow Package
 Navigation System with voice-activation, nearly 10-gigabyte hard drive, single-CD Premium Sound System and SIRIUS Travel Link^{1M} services with 6-month subscription^{8,9}
 Power-deployable running boards¹⁰
 Power moonroof with mini-overhead console¹¹
 Rear-Seat DVD Entertainment System⁷



EXPEDITION LIMITED

Equipped with all standard Eddie Bauer features, plus:

Rapid Spec 300A:

18" bright-machined aluminum wheels
 Monochromatic appearance
 Headlamps with blackout treatment (Limited only)
 Rain-sensing windshield wipers
 Chrome roof side rails with Black crossbars (Limited only)
 Body-color running boards
 Body-color, power-folding, heated sideview mirrors with memory, security approach lamps and integrated turn signals
 Power rear quarter windows
 Power liftgate
 Rear View Camera
 1st-row, 10-way power, heated and cooled leather-trimmed bucket seats, including power lumbar and recline with driver memory
 Heated 2nd-row seats
 Universal Garage Door Opener
Heavy-Duty Trailer Tow Package

Available Option Group

Rapid Spec 301A: Limited Luxury Package: Navigation System, Rear-Seat DVD Entertainment System, power moonroof and 20" chrome-clad aluminum wheels + power-deployable running boards

Available Options

Air suspension with rear load leveling and message center¹²
 20" chrome-clad aluminum wheels
 3.73 non-limited slip rear axle (non-EL only)
 2nd-row bucket seats with same trim as 1st-row seats
 Control Trac 4-wheel-drive (4WD) system
 Daytime running lamps
 Navigation System with voice-activation, nearly 10-gigabyte hard drive, single-CD Premium Sound System and SIRIUS Travel Link services with 6-month subscription⁹
 Power moonroof with mini-overhead console
 Rear-Seat DVD Entertainment System
 Rubber floor mats in 1st and 2nd rows

¹Requires Heavy-Duty Trailer Tow Package. ²Requires Rapid Spec 101A or 102A. ³Requires Rapid Spec 102A. ⁴Requires Rapid Spec 101A. ⁵Requires Rapid Spec 203A. ⁶Not available with Rapid Spec 200A. ⁷Requires Rapid Spec 201A. ⁸Requires Rapid Spec 202A. ⁹Requires Rear-Seat DVD Entertainment System. ¹⁰Requires Rapid Spec 202A or 203A. ¹¹Requires Rapid Spec 201A or 202A. ¹²Requires Rapid Spec 301A. ¹³Requires Rapid Spec 401A.

Microsoft is a registered trademark of Microsoft Corporation.

The Bluetooth word mark is a trademark of the Bluetooth SIG, Inc.

SIRIUS is a registered trademark of SIRIUS XM Radio Inc. Subscriptions governed by SIRIUS Terms and Conditions at sirius.com/serviceterms.



EXPEDITION KING RANCH®

Equipped with all standard Limited features, plus:

Rapid Spec 400A:

18" machined-aluminum wheels with King Ranch logo on center caps
 Pueblo Gold lower bodyside moldings, wheel-lip moldings, bumpers and running boards
 Chrome grille
 King Ranch logo on front fender and liftgate
 Chaparral leather trim on all 3 rows of seating, steering wheel insert, center console lid and door-panel inserts
 1st-row heated and cooled seats with 10-way power driver seat, including power lumbar and recline with driver memory
 Simulated wood trim on switch panels, floor console, shifter handle and instrument panel
 Carpeted floor mats with embroidered King Ranch logo (1st and 2nd rows)

Available Option Group

Rapid Spec 401A: King Ranch Luxury Package: Navigation System, Rear-Seat DVD Entertainment System, power moonroof and 20" chrome-clad aluminum wheels with King Ranch logo on center caps + power-deployable running boards

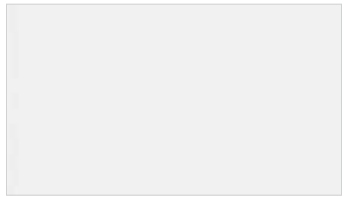
Available Options

Air suspension with rear load leveling and message center¹³
 20" chrome-clad aluminum wheels with King Ranch logo on center caps
 3.73 non-limited slip rear axle (non-EL only)
 2nd-row bucket seats with same trim as 1st-row seats
 Control Trac 4-wheel-drive (4WD) system
 Daytime running lamps
 Navigation System with voice-activation, nearly 10-gigabyte hard drive, single-CD Premium Sound System and SIRIUS Travel Link services with 6-month subscription⁹
 Power-deployable running boards
 Power moonroof with mini-overhead console
 Rear-Seat DVD Entertainment System
 Rubber floor mats in 1st and 2nd rows

Exterior colors.



Royal Red Metallic



White Platinum Metallic Tri-Coat



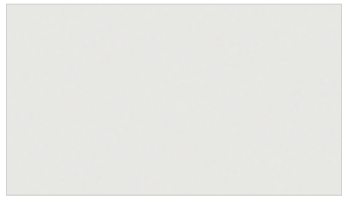
Ingot Silver Metallic



Dark Blue Pearl Metallic



Sterling Grey Metallic



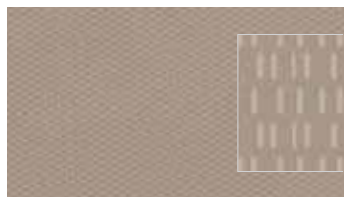
Oxford White



Tuxedo Black Metallic

Colors shown are representative only.
Not all colors are available on all models.
See your dealer for actual paint/trim options.

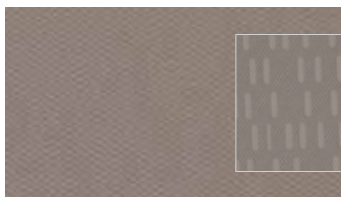
Interior colors.



Cloth - Camel with Camel inserts
Standard on XLT



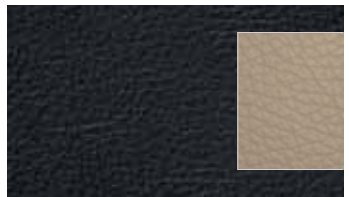
Leather - Camel
Optional on XLT, Standard on Eddie Bauer



Cloth - Stone with Stone inserts
Standard on XLT



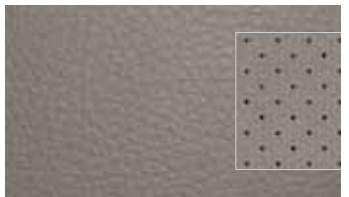
Leather - Stone
Optional on XLT



Leather - Charcoal Black with Camel inserts
Standard on Eddie Bauer



Leather - Charcoal Black with perforated inserts
Standard on Limited



Leather - Stone with perforated inserts
Standard on Limited



Leather - Chaparral
Standard on King Ranch

	Interior Colors	
XLT		
Royal Red Metallic	●	●
Ingot Silver Metallic		●
Dark Blue Pearl Metallic	●	●
Sterling Grey Metallic		●
Oxford White	●	●
Tuxedo Black Metallic	●	●

Eddie Bauer®		
Royal Red Metallic	●	●
White Platinum Metallic Tri-Coat ¹	●	●
Dark Blue Pearl Metallic	●	●
Oxford White	●	●
Tuxedo Black Metallic	●	●

Limited		
Royal Red Metallic		●
White Platinum Metallic Tri-Coat ¹		●
Ingot Silver Metallic		●
Sterling Grey Metallic		●
Tuxedo Black Metallic		●

King Ranch®		
Royal Red Metallic		●
White Platinum Metallic Tri-Coat ¹		●
Dark Blue Pearl Metallic		●
Tuxedo Black Metallic		●

INTERIORS: ● Camel ● Stone ● Charcoal Black ● Chaparral

¹Extra-cost option.