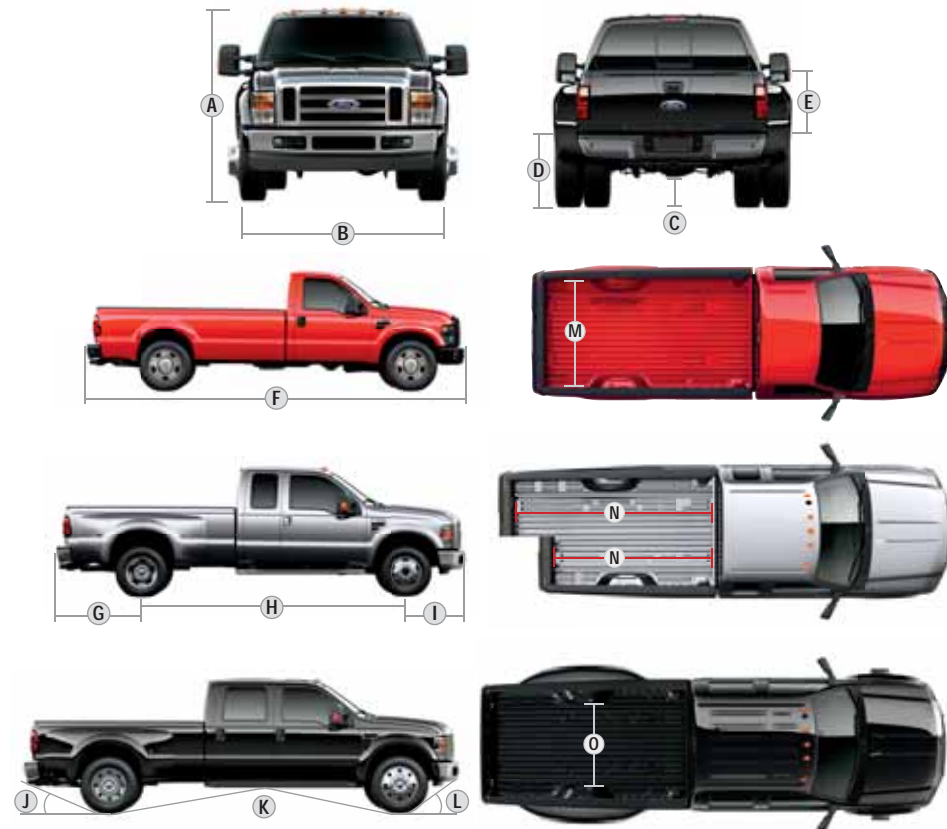


PICKUP DIMENSIONS

EXTERIOR	REGULAR CAB	SUPERCAB		CREW CAB	
	4x2/4x4	SWB 4x2/4x4	LWB 4x2/4x4	SWB 4x2/4x4	LWB 4x2/4x4
A. Height – F-250 SRW (w/o options)	75.9"/79.2"	76.4"/79.4"	76.2"/79.4"	77.2"/79.9"	76.7"/79.9"
A. Height – F-350 SRW (w/o options)	76.0"/80.2"	76.5"/80.6"	76.3"/80.4"	77.0"/81.1"	76.8"/80.9"
A. Height – F-350 DRW (w/o options)	76.1"/79.4"	–	76.5"/79.6"	–	77.0"/80.1"
A. Height – F-450 DRW (w/o options)	–	–	–	–	79.8"
B. Overall width – SRW (excl. mirrors)	79.9"	79.9"	79.9"	79.9"	79.9"
B. Overall width – DRW (excl. mirrors)	95.7"	–	95.7"	–	95.7"
B. Overall width – With standard mirrors	99.6"	99.6"	99.6"	99.6"	99.6"
C. Ground clearance – F-250 SRW	7.0"/7.8"	7.0"/7.8"	7.0"/7.8"	7.0"/7.8"	7.0"/7.8"
C. Ground clearance – F-350 SRW	7.0"/7.8"	7.0"/7.8"	7.0"/7.8"	7.0"/7.8"	7.0"/7.8"
C. Ground clearance – F-350 DRW	7.1"/7.5"	–	7.1"/7.4"	–	7.1"/7.4"
C. Ground clearance – F-450 DRW	–	–	–	–	7.8"
D. Loadfloor height – F-250 SRW	33.9"/34.4"	33.9"/34.5"	33.9"/34.5"	33.8"/34.5"	33.7"/34.5"
D. Loadfloor height – F-350 SRW	34.0"/37.2"	34.1"/37.3"	34.0"/37.2"	34.0"/37.2"	33.9"/37.2"
D. Loadfloor height – F-350 DRW	34.4"/35.0"	–	34.4"/35.1"	–	34.3"/35.1"
D. Loadfloor height – F-450 DRW	–	–	–	–	35.1"
E. Cargo box height	20.0"	20.1"	20.0"	20.1"	20.0"
F. Overall length	227.0"	231.8"	248.0"	246.2"	262.4"
G. Overhang – Rear	52.4"	52.4"	52.4"	52.4"	52.4"
H. Wheelbase	137.0"	141.8"	158.0"	156.2"	172.4"
I. Overhang – Front	37.6"	37.6"	37.6"	37.6"	37.6"
J. Angle of departure – F-250 SRW	16.4°/17.3°	16.4°/17.3°	16.2°/17.3°	16.3°/17.4°	16.2°/17.4°
J. Angle of departure – F-350 SRW	16.6°/20.3°	16.5°/20.2°	16.3°/20.2°	16.4°/20.2°	16.3°/20.2°
J. Angle of departure – F-350 DRW	17.0°/17.9°	–	16.8°/17.9°	–	16.7°/17.9°
J. Angle of departure – F-450 DRW	–	–	–	–	17.9°
K. Ramp breakover angle – F-250 SRW	13.7°/18.1°	13.1°/17.7°	11.6°/15.9°	11.8°/15.9°	10.9°/14.4°
K. Ramp breakover angle – F-350 SRW	14.3°/20.2°	13.6°/19.3°	12.0°/17.0°	12.1°/17.2°	11.0°/15.6°
K. Ramp breakover angle – F-350 DRW	13.8°/18.8°	–	13.2°/15.5°	–	11.0°/14.4°
K. Ramp breakover angle – F-450 DRW	–	–	–	–	15.2°
L. Angle of approach – F-250 SRW	21.0°/23.5°	21.1°/23.5°	21.2°/23.5°	22.4°/23.5°	21.2°/23.6°
L. Angle of approach – F-350 SRW	21.1°/22.8°	21.1°/22.8°	21.3°/22.9°	21.2°/22.9°	21.3°/22.9°
L. Angle of approach – F-350 DRW	20.9°/23.3°	–	21.0°/23.3°	–	21.1°/23.3°
L. Angle of approach – F-450 DRW	–	–	–	–	22.2°
INTERIOR					
Front					
Head room	41.4"	41.4"	41.4"	41.4"	41.4"
Shoulder room	68.0"	68.0"	68.0"	68.0"	68.0"
Hip room	67.6"	67.6"	67.6"	67.6"	67.6"
Leg room	41.0"	41.0"	41.0"	41.0"	41.0"
Rear					
Head room	–	38.4"	38.4"	41.4"	41.4"
Shoulder room	–	68.1"	68.1"	68.0"	68.0"
Hip room	–	67.3"	67.3"	67.3"	67.3"
Leg room	–	31.8"	31.8"	41.8"	41.8"

CARGO BOX	REGULAR CAB	SUPERCAB		CREW CAB	
	4x2/4x4	SWB 4x2/4x4	LWB 4x2/4x4	SWB 4x2/4x4	LWB 4x2/4x4
Volume (cu. ft.)	77.4	64.4	77.4	64.4	77.4
M. Width at floor (maximum)	69.3"	69.3"	69.3"	69.3"	69.3"
N. Length at floor	98.0"	81.8"	98.0"	81.8"	98.0"
O. Width at wheelhouse	50.9"	50.9"	50.9"	50.9"	50.9"



¹Always wear your safety belt and always deactivate the passenger airbag when using a rear-facing child-safety seat with Regular Cab and SuperCab models. Always wear your safety belt and always secure children in the rear seat in Crew Cab models. ²SOS hardware may become damaged or the battery may lose power in a crash, which could prevent operation. Not all crashes will activate an airbag or safety belt pretensioner. ³Under normal driving conditions with routine fluid and filter changes. ⁴Final-stage manufacturer must supply control switches. ⁵4L/6-speed manual. ⁶8L/6-speed manual. ⁷5.4L/TorqShift® 5-speed automatic. ⁸6.8L/TorqShift 5-speed automatic. ⁹6.4L/TorqShift 5-speed automatic. ¹⁰6.4L/6-speed manual. ¹¹Governed at 325 hp @ 3000 rpm and 600 lb.-ft. of torque @ 2000 rpm on F-450.

PICKUP STANDARD FEATURES

SAFETY/SECURITY

4-wheel power disc brakes with Anti-lock Brake System (ABS)
 Airbags¹ – Driver and right-front-passenger
 Alert chimes – Headlamps-on, key-in-ignition and door ajar
 Belt-Minder[®] front safety belt reminder
 Brake/shift interlock (with automatic transmission)
 Child-safety-seat top tether anchors (Regular Cab front passenger and all rear-seat positions)
 Fuel pump inertia shutoff switch
 Height-adjustable safety belts – Front-outboard positions
 Locking tailgate
 Passenger airbag deactivation switch (Regular Cab, SuperCab)
 Safety belt energy-management retractors – Front-outboard positions
 Side-intrusion door beams
 SOS Post-Crash Alert System[™]²
 Spare tire/wheel lock
 Tire Pressure Monitoring System (SRW only; excludes spare)

MECHANICAL

5.4L SOHC 3-valve V8 engine (F-250, F-350)
 6.4L OHV 32-valve Power Stroke[®] V8 Turbo Diesel engine (F-450)
 6-speed manual overdrive transmission (restrictions apply)
 90,000-mile tune-up interval³ (gas engines)
 Battery saver
 Fail-safe engine cooling system (gas engines)
 Fuel tank – 30.5-gallon capacity with 6¾' box; 38-gallon capacity with 8' box
 Manual 4-wheel-drive system with manual locking hubs (4x4 models only)
 Power steering
 Quick-release tailgate with Tailgate Assist
 Securilock[®] passive anti-theft ignition system
 Spare tire/wheel/jack – Conventional with underframe carrier (crank-down type)
 Stabilizer bar – Front
 Stabilizer bar – Rear (DRW only)
 Stainless steel exhaust system (major components)
 Stationary Elevated Idle Control (SEIC)⁴
 Steering damper
 Styleside box

INTERIOR

Assist and ride handles
 Coat hooks – 1 (Regular Cab); 2 in rear of cab (SuperCab and Crew Cab)
 Dome light (front and rear with Crew Cab)
 Flip-open rear quarter windows (SuperCab)
 Message center with odometer, trip odometer, engine-hour meter and warning messages
 Power points – 2 on instrument panel
 Steering wheel – Black urethane

EXTERIOR

Bumpers – Front step and rear step
 Cargo box – Partitionable and stackable
 Cargo box lamp – Integrated with center high-mounted stop lamp
 Cargo box rail and tailgate top moldings
 Cargo box stake pockets
 Cargo tie-down hooks – 4 in 6¾' box; 6 in 8' box
 Solar-tinted glass
 Tow hooks – 2 in front
 Trailer hitch receiver – 12.5K (2") Built Ford Tough[®] (SRW/F-350 DRW 5.4L)
 Trailer hitch receiver – 15K (2½") Built Ford Tough (F-350 DRW 6.8L/6.4L only)
 Trailer hitch receiver – 16K (2½") Built Ford Tough (F-450 only)
 Trailer tow – 7-/4-pin connector and trailer brake wiring kit (in-cab, no controller)
 Windshield wipers – Intermittent

PICKUP MAXIMUM PAYLOAD

GVWR RATINGS

F-Series Super Duty[®] models maintain near-maximum payload capacity even when a larger cab or engine is selected.

MAXIMUM PAYLOAD WEIGHT RATINGS (LBS.) – MODEL/WHEELBASE (WB)

	MAX. GVWR (LBS.)	REGULAR CAB					SUPERCAB					CREW CAB					
		137.0" WB	141.1" WB	158.0" WB	156.2" WB	172.4" WB	137.0" WB	141.1" WB	158.0" WB	156.2" WB	172.4" WB	137.0" WB	141.1" WB	158.0" WB	156.2" WB	172.4" WB	
F-250 SRW 4x2	8800	3110 ⁵	—	—	—	—	—	—	—	—	—	—	—	—	—	—	
	9000	3180 ⁶	3090 ⁷	—	—	—	—	—	—	—	—	—	—	—	—	—	
	9200	—	3160 ⁸	3130 ⁷	3080 ⁷	—	—	—	—	—	—	—	—	—	—	—	
	9400	2790 ⁹	—	3200 ⁸	3150 ⁸	3160 ⁷	—	—	—	—	—	—	—	—	—	—	
	9600	—	—	2700 ⁹	—	3220 ⁸	—	—	—	—	—	—	—	—	—	—	
	9800	—	—	—	2780 ⁹	2730 ⁹	—	—	—	—	—	—	—	—	—	—	
10,000	—	—	—	—	2800 ⁹	—	—	—	—	—	—	—	—	—	—		
F-250 SRW 4x4	9000	2890 ⁵	—	—	—	—	—	—	—	—	—	—	—	—	—	—	
	9200	2950 ⁶	2870 ⁵	—	—	—	—	—	—	—	—	—	—	—	—	—	
	9400	—	2930 ⁶	2910 ⁵	2850 ⁵	—	—	—	—	—	—	—	—	—	—	—	
	9600	2550 ¹⁰	—	2980 ⁶	2920 ⁶	2930 ⁵	—	—	—	—	—	—	—	—	—	—	
	9800	—	—	2460 ¹⁰	—	3000 ⁶	—	—	—	—	—	—	—	—	—	—	
	10,000	—	—	—	2540 ¹⁰	2480 ¹⁰	2360 ¹⁰	—	—	—	—	—	—	—	—	—	
F-350 SRW 4x2	10,000	4140 ⁵	3920 ⁷	3760 ⁷	3710 ⁷	3590 ⁷	—	—	—	—	—	—	—	—	—	—	
	10,000	4010 ⁶	3790 ⁸	3630 ⁸	3580 ⁸	3450 ⁸	—	—	—	—	—	—	—	—	—	—	
	10,000	3220 ⁹	2960 ⁹	2840 ⁹	2790 ⁹	2660 ⁹	—	—	—	—	—	—	—	—	—	—	
	10,100	4240 ⁵ /4110 ⁶	4020 ⁷	—	—	—	—	—	—	—	—	—	—	—	—	—	
	10,200	—	3990 ⁸	—	—	—	—	—	—	—	—	—	—	—	—	—	
	10,400	—	—	4160 ⁷	4110 ⁷	—	—	—	—	—	—	—	—	—	—	—	
	10,600	3820 ⁹	—	4230 ⁸	4180 ⁸	4190 ⁷	—	—	—	—	—	—	—	—	—	—	
	10,800	—	—	3760 ⁹	—	4250 ⁸	—	—	—	—	—	—	—	—	—	—	
	11,000	—	—	—	3840 ⁹	3790 ⁹	—	—	—	—	—	—	—	—	—	—	
	11,200	—	—	—	—	3860 ⁹	—	—	—	—	—	—	—	—	—	—	
	F-350 DRW 4x2	10,000	3720 ⁵	3490 ⁵	3340 ⁵	3280 ⁵	3160 ⁵	—	—	—	—	—	—	—	—	—	—
		10,000	3580 ⁶	3360 ⁶	3200 ⁶	3150 ⁶	3030 ⁶	—	—	—	—	—	—	—	—	—	—
10,000		2780 ¹⁰	2520 ¹⁰	2400 ¹⁰	2340 ¹⁰	2220 ¹⁰	—	—	—	—	—	—	—	—	—	—	
10,400		4120 ⁵	—	—	—	—	—	—	—	—	—	—	—	—	—	—	
10,600		4180 ⁶	—	4090 ⁵	—	—	—	—	—	—	—	—	—	—	—	—	
10,800		—	—	4160 ⁶	4140 ⁵	4080 ⁵	—	—	—	—	—	—	—	—	—	—	
11,000		3780 ¹⁰	—	—	4200 ⁶	4150 ⁶	4160 ⁵	—	—	—	—	—	—	—	—	—	
11,200		—	—	3720 ¹⁰	—	—	—	—	—	—	—	—	—	—	—	—	
11,400		—	—	—	3800 ¹⁰	3740 ¹⁰	—	—	—	—	—	—	—	—	—	—	
11,500		—	—	—	—	—	—	—	—	—	—	—	—	—	—	3720 ¹⁰	
F-350 DRW 4x4		11,800	5620 ⁷	—	—	—	—	—	—	—	—	—	—	—	—	—	—
		12,000	5690 ⁸	—	—	—	—	—	—	—	—	—	—	—	—	—	—
	12,200	—	—	—	5640 ⁷	—	—	—	—	—	—	—	—	—	—	—	
	12,400	5300 ⁹	—	—	5710 ⁸	—	—	—	—	—	—	—	—	—	—	—	
	12,600	—	—	—	—	—	—	—	—	—	—	—	—	—	—	5730 ⁸	
	12,800	—	—	—	5320 ⁹	—	—	—	—	—	—	—	—	—	—	—	
13,000	—	—	—	—	—	—	—	—	—	—	—	—	—	—	5350 ⁹		
F-350 DRW 4x4	12,000	5390 ⁷	—	—	—	—	—	—	—	—	—	—	—	—	—	—	
	12,200	5460 ⁸	—	—	—	—	—	—	—	—	—	—	—	—	—	—	
	12,400	—	—	—	5420 ⁷	—	—	—	—	—	—	—	—	—	—	5240 ⁷	
	12,600	5060 ¹⁰	—	—	5480 ⁸	—	—	—	—	—	—	—	—	—	—	5310 ⁸	
	12,800	—	—	—	—	—	—	—	—	—	—	—	—	—	—	—	
	13,000	—	—	—	5080 ¹⁰	—	—	—	—	—	—	—	—	—	—	4910 ¹⁰	
F-450 DRW 4x2	14,500	—	—	—	—	—	—	—	—	—	—	—	—	—	6180 ⁹		
F-450 DRW 4x4	14,500	—	—	—	—	—	—	—	—	—	—	—	—	—	5830 ¹⁰		

PICKUP POWERTRAIN SPECIFICATIONS

	5.4L 3-VALVE V8	6.8L 3-VALVE V10	6.4L POWER STROKE V8 TURBO DIESEL		5.4L 3-VALVE V8	6.8L 3-VALVE V10	6.4L POWER STROKE V8 TURBO DIESEL
Configuration	SOHC	SOHC	OHV (32-valve)	Cylinders	8	10	8
Fuel injection	Sequential Electronic	Sequential Electronic	High-Pressure Common-Rail	Cylinder-head	Aluminum	Aluminum	Cast iron
Engine control system	Electronic	Electronic	Electronic	Block material	Cast iron	Cast iron	Cast iron
Induction system	Specially tuned	Specially tuned	Series Sequential Turbochargers; charged air cooler	Valve operation	Hydraulic roller	Hydraulic roller	Push rod/rocker arms
Battery	12-volt; 650-CCA/72-amp	12-volt; 650-CCA/72-amp	Dual 12-volt; 750-CCA/78-amp	Camshaft drive	Variable cam timing	Silent chain	Gear
Alternator	157-amp	157-amp	135-amp (Single 200-amp or dual combined 320-amp, optional)	Bore	3.55"	3.55"	3.86"
Cooling system	Pressurized series flow	Pressurized series flow	Pressurized series flow	Stroke	4.16"	4.16"	4.13"
				Compression ratio	9.8:1	9.2:1	17.5:1
				Horsepower/rpm	300 @ 5000	362 @ 4750	350 @ 3000 ¹¹
				Torque lb.-ft./rpm	365 @ 3750	457 @ 3250	650 @ 2000 ¹¹
				Recommended fuel	Unleaded	Unleaded	Ultra-Low-Sulfur Diesel

*See previous page for footnotes and other restrictions.

PICKUP FEATURES & OPTIONS

XL				
XLT				
CABELA'S®				
LARIAT				
MECHANICAL				
●	●	●	●	5.4L SOHC 3-valve V8 engine (n/a on F-350 DRW Crew Cab)
○	○	○	○	6.8L SOHC 3-valve V10 engine (standard on F-350 DRW Crew Cab)
○	○	○	○	6.4L OHV 32-valve Power Stroke® V8 Turbo Diesel engine (standard on F-450)
●	●	●	●	TorqShift® 5-speed automatic overdrive transmission with Tow/Haul Mode (standard on Cabela's, LARIAT and F-350 DRW)
○	○	○	○	Electronic Shift-On-the-Fly (ESOF) 4-wheel-drive system with auto/manual locking hubs (4x4 models only)
●	—	—	—	17" argent-painted steel wheels — 5 (F-250); 5 (F-350 SRW)
●	●	—	—	17" argent-painted steel wheels — 7 (F-350 DRW)
—	●	—	—	17" 5-spoke cast-aluminum wheels — 4 (F-250)
—	○	—	●	17" forged polished-aluminum wheels — 4 (F-350 DRW)
●	—	—	—	18" argent-painted steel wheels — 4 (F-350 SRW)
—	●	●	—	18" bright machined cast-aluminum wheels — 4 (optional on F-250 XLT; standard on F-350 SRW XLT)
—	—	—	●	18" premium forged-aluminum wheels — 4 (F-250/F-350 SRW)
●	●	—	●	19.5" forged polished-aluminum wheels — 4 (F-450)
—	●	○	○	20" forged polished-aluminum wheels — 4 (F-250/F-350 SRW 4x4 diesel engine only; SuperCab and SuperCrew only)
—	—	—	●	20" KING RANCH® premium painted forged-aluminum wheels — 4 (F-250/F-350 SRW 4x4 only; requires KING RANCH Package)
●	●	—	—	LT245/75R17 all-season BSW tires — 5 (F-250)
○	—	—	—	LT245/75R17 all-terrain BSW tires — 5 (F-250)
○	○	—	—	LT265/70R17 all-terrain BSW tires — 5 (F-250)
—	○	—	—	LT265/70R17 all-terrain OWL tires — 4 (F-250)
●	—	—	—	LT245/75R17 all-season BSW tires — 5 (F-350 SRW)
○	—	—	—	LT265/70R17 all-terrain BSW tires — 5 (F-350 SRW)
—	○	—	●	LT275/65R18 all-season BSW tires — 5 (F-250 4x2)
—	○	—	●	LT275/70R18 all-season BSW tires — 5 (F-250 4x4)
—	○	—	○	LT275/70R18 all-terrain BSW tires — 4 (F-250 4x4)
○	○	—	○	LT275/70R18 all-terrain BSW tires — 4 (F-350 SRW 4x4)
—	○	●	○	LT275/70R18 all-terrain OWL tires — 4 (F-250/F-350 SRW 4x4)
—	—	—	○	LT275/65R20 all-terrain BSW tires — 4 (F-250/F-350 SRW 4x4)
—	●	○	○	LT275/65R20 all-terrain OWL tires — 4 (F-250/F-350 SRW 4x4)
●	●	—	●	LT275/65R18 all-season BSW tires — 5 (F-350 SRW 4x2)
○	●	—	●	LT275/70R18 all-season BSW tires — 5 (F-350 SRW 4x4)
●	●	—	●	LT245/75R17 all-season BSW tires — 7 (F-350 DRW)
○	○	—	○	LT245/75R17 all-terrain BSW tires — 7 (F-350 DRW)
—	○	—	○	LT245/75R17 all-terrain OWL tires — 4 (F-350 DRW)
●	●	—	●	225/70R19.5 all-season BSW tires — 7 (F-450)
○	○	—	○	225/70R19.5 traction tires — 4 (F-450; 4x4 only)
○	○	○	○	Alternator — Single, extra-heavy-duty 200-amp (diesel engine only)
○	○	○	○	Alternators — Dual, 320-amp total (diesel engine only)
○	○	○	○	Engine block heater (standard in 15 cold-weather states)

XL				
XLT				
CABELA'S®				
LARIAT				
MECHANICAL (continued)				
○	○	○	○	Higher-ratio rear axle (restrictions apply)
○	●	●	○	Integrated Trailer Brake Controller (standard on F-450)
●	●	●	●	Limited-slip rear axle
●	●	●	●	Power TakeOff (PTO) provision — Optional on 6.4L diesel with automatic transmission (included with man. trans.)
●	○	●	●	Reverse Vehicle Aid Sensor (n/a with pickup box delete or man. trans.) ¹
○	○	○	○	Traction Control
SEATING				
●	—	—	—	Front full bench with reclining seat — HD vinyl
○	—	—	—	Front full bench with reclining seat — HD cloth
○	●	—	○	Front seat — 40/20/40 split with armrest, cupholders and storage (XL — HD vinyl or cloth; XLT — premium cloth; LARIAT — leather-trimmed)
—	○	—	—	Front seat — Leather-trimmed 40/20/40 split with armrest, cupholders and storage
○	—	—	—	Front bucket seats — HD vinyl or HD cloth
—	○	●	—	Front cloth seats with center console
—	—	○	●	Front leather-trimmed seats with center console
●	●	○	○	Rear folding bench seat (SuperCab and XL Crew Cab; XL — HD vinyl or cloth; XLT — premium cloth or premium vinyl; Cabela's — cloth or leather-trimmed; LARIAT — premium vinyl)
—	●	●	●	Rear FlexFold® 60/40 split fold-flat seat, steel loadfloor, bag hooks, dual integrated cupholders and tray, and 2 outboard head restraints (Crew Cab; XLT — premium cloth or leather-trimmed; Cabela's — cloth or leather-trimmed; LARIAT — leather-trimmed)
—	—	●	●	Heated seats — Driver and front-passenger, 2 settings (requires leather trim)
—	●	—	—	Lumbar support — Driver only
—	—	●	●	Lumbar support — Driver and front-passenger
—	●	●	●	Power 6-way driver seat (and front-passenger seat on SuperCab and Crew Cab)
INTERIOR				
●	●	●	●	Accessory delay for power features ²
●	●	●	—	Air conditioning — Manual
—	—	●	●	Air conditioning — Dual-zone Electronic Automatic Temperature Control ¹
●	—	—	—	AM/FM stereo/digital clock with 2 speakers
●	●	●	●	AM/FM stereo/single-CD player with MP3 capability, digital clock and 4 speakers
—	○	○	●	AM/FM stereo/6-disc in-dash CD changer with MP3 capability, digital clock and 4 speakers (leather-wrapped steering wheel with secondary audio controls on XLT and Cabela's) ¹

XL				
XLT				
CABELA'S®				
LARIAT				
INTERIOR (continued)				
—	—	○	●	Premium Sound System AM/FM stereo/6-disc in-dash CD changer with MP3 capability, digital clock and 8 speakers with subwoofer (leather-wrapped steering wheel with secondary audio controls on Cabela's; n/a with Navigation System)
—	—	●	●	Navigation System with Premium Sound System AM/FM stereo/single-disc CD player with MP3 capability, USB port, in-dash touch screen, voice-activated controls, digital clock and 8 speakers with subwoofer (requires Ford SYNC®)
—	●	●	●	Ford SYNC voice-activated, in-vehicle communications and entertainment system ¹ (requires audio system with CD player)
●	●	●	●	SIRIUS Satellite Radio with 6-month trial subscription (requires CD system; n/a on Regular Cab)
●	●	●	●	Auxiliary audio input jack (requires CD)
●	●	●	●	Cruise control (requires tilt steering wheel)
—	—	●	●	Enhanced message center — Message center, plus trip computer with compass, distance to empty, average fuel economy, autolamp configuration and status, system check, and language selection
●	●	—	—	Floor covering — Black vinyl
—	●	●	●	Floor covering — Color-coordinated carpet
—	●	—	●	Floor mats — Color-coordinated carpet
—	○	●	○	Floor mats — Black all-weather
●	●	—	—	Instrument cluster — Black with black gauges
—	—	●	●	Instrument cluster — Metallic-faced with cream gauges ¹
●	●	●	—	Mirror — Day/night rearview
—	●	●	●	Mirror — Auto-dimming rearview with compass
—	—	●	●	Overhead console — Includes sunglasses storage and garage door opener storage
●	●	●	●	Power door locks ²
●	●	●	●	Power windows with one-touch-down driver-window feature ²
○	○	○	○	Rapid-Heat Supplemental Cab Heater (requires diesel engine with air conditioning and alternator upgrade)
—	○	○	○	Rear View Camera (requires SYNC)
—	○	○	○	Steering wheel — Black leather-wrapped
—	●	●	●	Steering wheel — Color-coordinated leather-wrapped with secondary audio controls ¹
●	●	●	●	Steering wheel — Tilt
○	○	○	○	Upfitter switches (4) — Located on instrument panel
●	●	—	—	Visors with passenger mirror
—	—	●	—	Visors with driver and passenger mirrors
—	—	●	●	Visors with illuminated driver and passenger mirrors ³
—	—	●	●	Woodgrain-style instrument panel accents

● Standard ● Select Availability ○ Optional — Not Available

¹Included with Cabela's Luxury Package. ²Included as part of Power Equipment Group on XL.

³Included on Cabela's with moonroof.

PICKUP FEATURES & OPTIONS

XL			
XLT			
CABELA'S®			
LARIAT			
EXTERIOR			
—	●	●	●
Autolamp with rainlamp feature (included with XLT Convenience Package)			
—	○	○	○
Bodyside moldings — Body-color (SRW only)			
●	—	—	—
Bumpers — Black-painted with grained top cover			
●	●	—	—
Bumpers — Chrome with grained top cover ¹			
—	—	●	—
Bumpers — Dark Shadow Grey-painted with grained top cover			
○	—	—	—
Cab steps — Black molded (standard on all trims of F-450)			
○	○	○	○
Cab steps — 5" chrome tubular (SuperCab and Crew Cab only)			
—	●	●	●
Fog lamps			
●	—	—	—
Grille — Black-painted bar-style			
—	●	—	—
Grille — Chrome bar-style w/Medium Platinum insert			
—	—	●	—
Grille — Body-color surround w/billet-style Medium Platinum insert			
●	—	—	—
Headlamps — Sealed-beam halogen			
●	●	●	●
Headlamps — Dual-beam jewel-effect ¹			
●	●	●	●
Lamp — Underhood engine-compartment ¹			
●	—	—	—
Mirrors — Manually telescoping trailer tow with 2-way fold and manual glass			
●	●	—	—
Mirrors — Manually telescoping trailer tow with 2-way fold, power/heated glass, heated manual spotter mirrors, and integrated clearance lamps and turn signals			
—	●	●	●
Mirrors — PowerScope™ power-telescoping/-folding trailer tow with power/heated glass, heated manual spotter mirrors, and integrated clearance lamps and turn signals (XLT requires XLT Convenience Group)			
—	—	○	○
Moonroof — Power-sliding (Crew Cab only) ²			
●	●	—	—
Pickup box delete (F-250/F-350 only; requires 8' box; n/a with 6.8L engine or Rear View Camera)			
—	●	●	●
Privacy glass (rear doors and rear window)			
○	○	○	○
Roof clearance lamps (standard on DRW)			
●	●	●	●
Skid plates — Transfer case and fuel tank (included with FX4 OFF-ROAD Package on XL, XLT and LARIAT)			
●	○	○	—
Sliding rear window — Manual			
—	—	●	●
Sliding rear window — Power with privacy glass ³			
—	○	○	○
Stowable bed extender (F-250/F-350 SRW only)			
○	○	○	○
Tailgate Step — Includes step, Tailgate Assist and grab bar			
○	○	○	○
ToughBed® spray-in bedliner — Includes tailgate guard and black bed bolts (available Fall 2009)			
—	—	●	○
Two-tone paint — Lower-accent			
—	—	●	●
Wheel-lip moldings — Dark Shadow Grey on Cabela's; accent-color on LARIAT with optional two-tone paint (SRW only)			
FORD WORK SOLUTIONS™			
○	○	○	—
In-dash Windows® CE computer with touch screen (restrictions apply)			
○	○	○	○
Cable Lock by Master Lock® (replaces cargo tie-down hooks)			
○	○	○	—
Crew Chief™ (n/a with SYNC or in-dash computer)			
○	○	○	—
Tool Link™ (requires in-dash computer; restrictions apply)			

XL			
XLT			
CABELA'S®			
LARIAT			
PACKAGES			
●	○	○	○
10,000-lb. GVWR Package (F-350 SRW)			
○	○	○	○
Camper Package — Includes front springs upgrade (unless maximum springs have been computer-selected as included equipment); rear stabilizer bar (SRW); slide-in-camper certification; and auxiliary rear springs on F-250			
—	○	—	○
Chrome Package — Includes unique all-chrome billet-style grille; chrome exhaust tip; chrome tow hooks; unique chrome mirror caps; chrome cargo tie-down hooks; and 6" chrome angular step bars (requires PowerScope mirrors; SuperCab and Crew Cab only; other restrictions apply)			
—	●	●	—
Driver's Group — Includes leather-wrapped steering wheel with secondary audio controls and auto-dimming rearview mirror (requires SYNC)			
○	○	—	○
FX4 OFF-ROAD Package — Includes transfer case and fuel tank skid plates; Rancho® shocks; and FX4 OFF-ROAD box decals (requires 4x4, limited-slip rear axle and all-terrain tires)			
○	○	—	○
Heavy-Service Suspension Package — Includes front springs upgrade (unless maximum springs have been computer-selected as included equipment)			
○	●	●	●
Power Equipment Group — Includes power door locks, heated sideview mirrors and front windows (plus rear on Crew Cab) with one-touch-down driver-window feature; accessory delay; remote keyless entry; and perimeter anti-theft alarm			
—	—	●	○
Rear-Seat DVD Entertainment System — Includes roof-mounted DVD system with 8" video screen; 2 sets of wireless headphones; and a remote control (n/a with moonroof; Crew Cab only; requires SYNC; Cabela's requires Cabela's Luxury Package)			
○	○	○	○
Snow Plow Prep Package — Includes computer-selected springs for snow plow application; 200-amp. alternator; and heavy-duty alternator with gas engines (4x4 only; restrictions apply)			
○	○	○	○
TowBoss Package — Includes 4.10 limited-slip rear axle and increased GCWR to 26,000 lbs. (F-350 DRW only; requires 6.4L diesel engine, auto. trans. and integrated Trailer Brake Controller)			
○	—	—	—
XL Décor Group — Includes chrome bumpers with grained top cover; dual-beam jewel-effect headlamps; bright-chrome hub covers and center ornaments (SRW only); and underhood engine-compartment lamp			
○	—	—	—
XL Plus Package — Includes AM/FM stereo/single-CD player with MP3 capability, digital clock and 4 speakers; cruise control; and tilt steering wheel			
—	○	—	—
XLT Convenience Package — Includes power driver seat, fog lamps, power-adjustable pedals, automatic headlamps with rainlamp feature, autolock/auto unlock, and SecuriCode™ keyless-entry keypad (requires auto. trans.)			
—	—	●	—
Cabela's Additional Features — Custom molded mud flaps; Cabela's box decals and tailgate badge; Cabela's logo bed mat (n/a with ToughBed); 6" angular painted tubular step bars; unique hub caps with center ornaments; unique cloth seats with stitched Cabela's logo on seatbacks; rear FlexFold 60/40 split fold-flat seat with lockable underseat storage; and center floor console with lockable storage (Crew Cab SRW with auto. trans. only; n/a with Chrome Package, Nav. or DVD)			

XL			
XLT			
CABELA'S®			
LARIAT			
PACKAGES (continued)			
—	—	○	—
Cabela's Luxury Package — Adds to Cabela's content: SYNC; leather-wrapped steering wheel with SYNC controls; Dual-zone Electronic Automatic Temperature Control; Reverse Vehicle Aid Sensor; power-sliding rear window; memory PowerScope mirrors; memory power driver seat; message center and trip computer; memory power-adjustable pedals; AM/FM stereo with 6-disc CD/MP3 capability; and heated leather-trimmed front seats with stitched Cabela's logo on seatbacks (Crew Cab SRW)			
—	—	—	○
Ford Harley-Davidson™ F-Series Super Duty® Package — Includes standard Black monotone or optional Black with painted Tuxedo Black Flames; dimensional chrome boxside lettering (requires optional painted flames); body-color front and rear bumpers; billet-style grille insert with body-color surround; blacked-out headlamps; PowerScope trailer tow mirrors with body-color mirror caps; 20" polished/painted forged-aluminum wheels; 19.5" polished forged-aluminum wheels (F-450 only); laser-engraved serialization plate; front leather-trimmed center console; unique Black leather-trimmed front seats and rear FlexFold 60/40 split fold-flat seat with chrome Bar & Shield badges; Premium Sound System with AM/FM stereo/6-disc in-dash CD changer; Rear View Camera; Universal Garage Door Opener; and much more (restrictions apply; diesel engine only)			
—	—	—	○
KING RANCH — Includes Pueblo Gold two-tone paint; unique chrome grille with accent-color insert; accent-color front bumper; accent-color illuminated tubular cab steps; accent-color rear bumper with step pad; PowerScope trailer tow mirrors with body-color mirror caps; unique 18" painted forged polished-aluminum wheels; forged polished-aluminum wheels (DRW); heated front seats; front console with KING RANCH Chaparral leather-trimmed lid/armsrests; front seats and rear FlexFold 60/40 split fold-flat seat with unique KING RANCH Chaparral leather trim; Premium Sound System with AM/FM stereo/6-disc in-dash CD changer; Rear View Camera; Universal Garage Door Opener; and much more			
—	—	—	○
KING RANCH with Chrome Package — Includes KING RANCH Package, plus: chrome exhaust tip; chrome tow hooks; unique chrome mirror caps; chrome cargo tie-down hooks; and 6" chrome angular step bars (requires Crew Cab with auto. trans.)			
—	—	—	○
LARIAT Plus Package — Includes AM/FM stereo/6-disc in-dash CD changer; memory power driver seat; memory power trailer tow mirrors; memory power-adjustable pedals; Rear View Camera; and Universal Garage Door Opener (restrictions apply)			
—	—	—	○
LARIAT Ultimate Package — Includes memory power driver seat; memory power trailer tow mirrors; memory power-adjustable pedals; moonroof; Navigation System; Rear View Camera; Tailgate Step; and Universal Garage Door Opener (requires auto. trans.; restrictions apply)			

● Standard ● Select Availability ○ Optional — Not Available

¹Included as part of the XL Décor Group. ²Not available with Rear-Seat DVD Entertainment System.

³Included with Cabela's Luxury Package.

PICKUP CONVENTIONAL TOWING – Maximum Loaded Trailer Weight Ratings (lbs.)

MANUAL TRANSMISSION			REGULAR CAB				SUPERCAB				CREW CAB					
ENGINE	AXLE RATIO	GCWR (LBS.)	F-250/ F-350 SRW 4x2	F-350 DRW 4x2	F-250/ F-350 SRW 4x4	F-350 DRW 4x4	F-250/ F-350 SRW 4x2	F-350 DRW 4x2	F-250/ F-350 SRW 4x4	F-350 DRW 4x4	F-250/ F-350 SRW 4x2	F-350 DRW 4x2	F-450 DRW 4x2	F-250/ F-350 SRW 4x4	F-350 DRW 4x4	F-450 DRW 4x4
5.4L 3-Valve V8	3.73	15,000	9200	—	8800	—	—	—	8500	—	—	—	—	8300	—	—
	4.10LS	17,000	11,200	—	10,800	—	—	—	10,500	—	—	—	—	10,300	—	—
6.8L 3-Valve V10	4.10LS	20,000	12,500	—	12,500	—	—	—	12,500	—	—	—	—	12,500	—	—
	4.30LS	22,000	12,500	—	12,500	—	—	—	12,500	—	—	—	—	12,500	—	—
6.4L Power Stroke® V8 Turbo Diesel	3.55	23,000	—	—	12,500	—	—	—	12,500	—	—	—	—	12,500	—	—
	3.73	23,500	—	—	—	15,000	—	—	—	15,000	—	—	—	—	15,000	—
	4.10LS	23,500	—	—	—	15,000	—	—	—	15,000	—	—	—	—	15,000	—
	4.30LS	27,000	—	—	—	—	—	—	—	—	—	—	—	—	—	16,000

AUTOMATIC TRANSMISSION			REGULAR CAB				SUPERCAB				CREW CAB					
ENGINE	AXLE RATIO	GCWR (LBS.)	F-250/ F-350 SRW 4x2	F-350 DRW 4x2	F-250/ F-350 SRW 4x4	F-350 DRW 4x4	F-250/ F-350 SRW 4x2	F-350 DRW 4x2	F-250/ F-350 SRW 4x4	F-350 DRW 4x4	F-250/ F-350 SRW 4x2	F-350 DRW 4x2	F-450 DRW 4x2	F-250/ F-350 SRW 4x4	F-350 DRW 4x4	F-450 DRW 4x4
5.4L 3-Valve V8	3.73	16,000	10,200	—	9800	—	10,000	—	9500	—	9700	—	—	9300	—	—
	4.10LS	18,000	12,200	—	11,800	—	12,000	—	11,500	—	11,700	—	—	11,300	—	—
6.8L 3-Valve V10	4.10LS	18,500	—	12,200	—	11,800	—	11,800	—	11,400	—	11,600	—	—	11,200	—
		21,000	12,500	—	12,500	—	12,500	—	12,500	—	12,500	—	—	12,500	—	—
	23,000	—	15,000	—	15,000	—	15,000	—	15,000	—	15,000	—	—	15,000	—	
6.4L Power Stroke V8 Turbo Diesel	4.30LS	22,500	12,500	—	12,500	—	12,500	—	12,500	—	12,500	—	—	12,500	—	—
		23,000	12,500	—	12,500	—	12,500	—	12,500	—	12,500	—	—	12,500	—	—
	3.31	23,000	12,500	—	12,500	—	12,500	—	12,500	—	12,500	—	—	12,500	—	—
6.4L Power Stroke V8 Turbo Diesel	3.55	23,000	12,500	—	12,500	—	12,500	—	12,500	—	12,500	—	—	12,500	—	—
		23,500	—	15,000	—	15,000	—	15,000	—	15,000	—	15,000	—	—	15,000	—
	4.10LS ¹	26,000	—	15,000	—	15,000	—	15,000	—	15,000	—	15,000	—	—	15,000	—
4.30LS	33,000	—	—	—	—	—	—	—	—	—	—	16,000	—	—	16,000	

Maximum capabilities shown are for properly equipped vehicles with required equipment and a 150-lb. driver. Weight of additional options, equipment, passengers and cargo must be deducted from this weight. For additional information, see your Ford Dealer.

Conventional Towing Notes: This information also applies to models with Pickup Box Delete option (66D). Trailer tongue load weight should be 10-15% of total loaded trailer weight. Make sure that the vehicle payload (reduced by option weight) will accommodate trailer tongue load weight and the weight of passengers and cargo added to the towing vehicle. The addition of trailer tongue load weight, and the weight of passengers and cargo, cannot cause vehicle weights to exceed the rear GAWR (Gross Axle Weight Rating) or GVWR (Gross Vehicle Weight Rating). These ratings can be found on the vehicle's Safety Compliance Certification Label. For F-250/F-350 SRW models, F-250 trailer weights are shown; F-350 trailer weights are within 200 lbs. Check with your sales consultant.

PICKUP MECHANICAL SPECIFICATIONS

FRONT SUSPENSION

Type	Twin-I-Beam (F-250/F-350 4x2); solid Twin-Coil Monobeam axle (F-250/F-350 4x4, F-450 4x2 and 4x4)
Axle (rating @ ground)	5250 lbs. (F-250/F-350 4x2); 6000 lbs. (F-250/F-350 4x4); 7000 lbs. (F-450)
Springs	Coil
Shock absorbers	1 ³ / ₈ " gas type
Stabilizer bar	Standard

REAR SUSPENSION

Type	Solid axle
Axle (rating @ ground)	6100 lbs. (F-250); 7050 lbs. (F-350 SRW); 9000 lbs. (F-350 DRW); 11,000 lbs. (F-450)
Springs	Leaf
Shock absorbers	1 ³ / ₈ " gas type
Stabilizer bar	Standard on DRW pickup; optional in package on SRW pickup

STEERING

Assist	Power
Overall ratio	20.35:1 (F-250/F-350 4x2); 19.77:1 (F-250/F-350 4x4); 20.38:1 average (F-450)

BRAKES

Type	4-wheel vented-disc ABS (standard)
Front (rotor diameter)	13.66" (F-250/F-350); 14.53" (F-450)
Rear (rotor diameter)	13.39" (F-250/F-350); 15.35" (F-450)

WHEELS

Type	Steel or aluminum
Size	17", 18" or 20" (F-250/F-350); 19.5" (F-450)
Number of studs	8 (F-250/F-350); 10 (F-450)
Bolt-circle diameter	6.7" (170-mm) SRW; 7.87" (200-mm) F-350 DRW; 8.85" (225-mm) F-450

POWERTRAINS

ENGINE	4x4 TRANSFER CASE	6-SPEED MANUAL	TOROSHIFT® 5-SPEED AUTOMATIC ²
5.4L 3-Valve SEFI V8	2-speed	●	●
6.8L 3-Valve SEFI V10	2-speed	●	●
6.4L Power Stroke V8 Turbo Diesel	2-speed	●	●

● Available

¹Available with TowBoss Package only. ²Standard on Cabela's®, LARIAT and F-350 DRW.

PICKUP 5TH-WHEEL TOWING — Maximum Loaded Trailer Weight Ratings (lbs.)

MANUAL TRANSMISSION			REGULAR CAB				SUPERCAB				CREW CAB					
ENGINE	AXLE RATIO	GCWR (LBS.)	F-250/ F-350 SRW 4x2	F-350 DRW 4x2	F-250/ F-350 SRW 4x4	F-350 DRW 4x4	F-250/ F-350 SRW 4x2	F-350 DRW 4x2	F-250/ F-350 SRW 4x4	F-350 DRW 4x4	F-250/ F-350 SRW 4x2	F-350 DRW 4x2	F-450 DRW 4x2	F-250/ F-350 SRW 4x4	F-350 DRW 4x4	F-450 DRW 4x4
5.4L 3-Valve V8	3.73	15,000	9200	—	8800	—	—	—	8500	—	—	—	—	8300	—	—
	4.10LS	17,000	11,200	—	10,800	—	—	—	10,500	—	—	—	—	10,300	—	—
6.8L 3-Valve V10	4.10LS	20,000	14,000	—	13,600	—	—	—	13,400	—	—	—	—	13,100	—	—
	4.30LS	22,000	16,000	—	15,600	—	—	—	15,400	—	—	—	—	15,100	—	—
6.4L Power Stroke® V8 Turbo Diesel	3.55	23,000	—	—	15,800	—	—	—	15,500	—	—	—	—	15,300	—	—
	3.73	23,500	—	—	—	15,800	—	—	—	15,500	—	—	—	—	15,200	—
	4.10LS	23,500	—	—	—	15,800	—	—	—	15,500	—	—	—	—	15,200	—
	4.30LS	27,000	—	—	—	—	—	—	—	—	—	—	—	—	—	18,200

AUTOMATIC TRANSMISSION			REGULAR CAB				SUPERCAB				CREW CAB					
ENGINE	AXLE RATIO	GCWR (LBS.)	F-250/ F-350 SRW 4x2	F-350 DRW 4x2	F-250/ F-350 SRW 4x4	F-350 DRW 4x4	F-250/ F-350 SRW 4x2	F-350 DRW 4x2	F-250/ F-350 SRW 4x4	F-350 DRW 4x4	F-250/ F-350 SRW 4x2	F-350 DRW 4x2	F-450 DRW 4x2	F-250/ F-350 SRW 4x4	F-350 DRW 4x4	F-450 DRW 4x4
5.4L 3-Valve V8	3.73	16,000	10,200	—	9800	—	10,000	—	9500	—	9700	—	—	9300	—	—
	4.10LS	18,000	12,200	—	11,800	—	12,000	—	11,500	—	11,700	—	—	11,300	—	—
6.8L 3-Valve V10	4.10LS	18,500	—	12,200	—	11,800	—	11,800	—	11,400	—	11,600	—	—	11,200	—
		21,000	15,000	—	14,600	—	14,800	—	14,400	—	14,600	—	—	14,100	—	—
	4.30LS	23,000	—	16,600	—	16,100	—	16,200	—	15,800	—	16,000	—	—	15,500	—
		22,500	16,500	—	16,100	—	16,300	—	16,300	—	16,100	—	—	15,600	—	—
6.4L Power Stroke V8 Turbo Diesel	3.31	23,000	16,300	—	15,800	—	16,000	—	15,500	—	15,800	—	—	15,300	—	—
		23,000	16,300	—	15,800	—	16,000	—	15,500	—	15,800	—	—	15,300	—	—
	3.73	23,500	—	16,300	—	15,800	—	15,900	—	15,500	—	15,700	—	—	15,200	—
	4.10LS ²	26,000	—	18,800	—	18,300	—	18,400	—	18,000	—	18,200	—	—	17,700	—
	4.30LS	33,000	—	—	—	—	—	—	—	—	—	—	24,600	—	—	24,200

5th-Wheel Towing Notes: This information also applies to models with Pickup Box Delete option (66D). Trailer kingpin weight should be 15–25% of total loaded trailer weight. Make sure that the vehicle payload (reduced by option weight) will accommodate trailer kingpin weight and the weight of passengers and cargo added to the towing vehicle. The addition of trailer kingpin weight, and the weight of passengers and cargo, cannot cause vehicle weights to exceed the rear GAWR (Gross Axle Weight Rating) or GVWR (Gross Vehicle Weight Rating). These ratings can be found on the vehicle's Safety Compliance Certification Label. For F-250/F-350 SRW models, F-250 trailer weights are shown; F-350 trailer weights are within 200 lbs. Check with your sales consultant.

¹Available with F-350 SRW only. ²Available with TowBoss Package only.

Quiet Steel is a registered trademark of Material Sciences Corporation.

Microsoft is a registered trademark of Microsoft Corporation.

The Bluetooth word mark is a trademark of the Bluetooth SIG, Inc.

Windows is a registered trademark of Microsoft Corporation.

DeWALT is a registered trademark of DeWALT Industrial Tool Company used under license.

Garmin is a registered trademark of Garmin Ltd.

Master Lock is a registered trademark of Master Lock Company LLC.

Microlise Group Limited is a company registered in England and Wales with company number 1670983.

Sprint and the logo are trademarks of Sprint. Sprint Mobile Broadband Network reaches over 249 million people. Coverage not available everywhere. See Sprint.com/coverage for details.

New Vehicle Limited Warranty. We want your Ford F-Series Super Duty ownership experience to be the best it can be. So under this warranty, your new vehicle comes with 3-year/36,000-mile Bumper-to-Bumper Coverage, 5-year/60,000-mile Powertrain Warranty Coverage, 5-year/50,000-mile Safety Restraint Coverage, and 5-year/unlimited-mile Corrosion (Perforation) Coverage — all with no deductible. The Power Stroke diesel engine gets 5-year/100,000-mile Warranty Coverage. Please ask your Ford Dealer for a copy of this limited warranty.

Roadside Assistance. Covers your vehicle for 5 years or 60,000 miles, so you have the security of knowing that help may be only a phone call away should you run out of fuel, lock yourself out of the vehicle, or need towing. Your Ford Dealer can provide complete details on all of these advantages.

Ford Credit. Get the ride you want. Whether you plan to lease or finance, you'll find the choices that are right for you at Ford Credit. Ask your Ford Dealer for details or check us out at fordcredit.com.

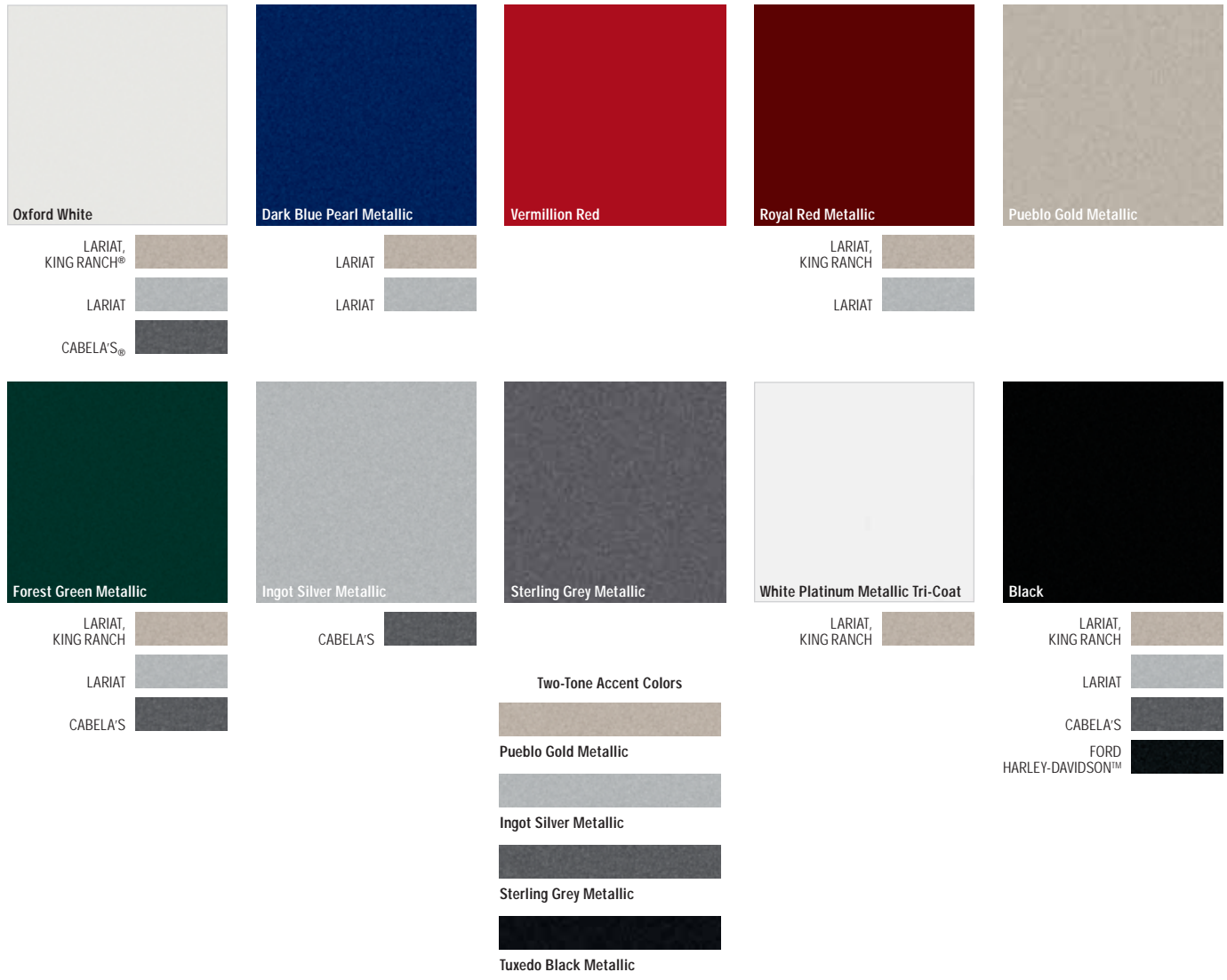
Ford Extended Service Plan. For a purchase or lease, the Ford Extended Service Plan (ESP) gives you "Peace-of-Mind" protection designed to cover key vehicle components and protect you from the cost of unexpected repairs. Ask your dealer for a Ford ESP, the only service contract backed exclusively by Ford and honored at all Ford dealerships.

Insurance Services. Get Ford Motor Company quality in your auto insurance. Our program offers industry-leading benefits and competitive rates. Call 1-877-367-3847, or visit us at fordvip.com for a no-obligation quote. Insurance offered by American Road Services Company (in CA, American Road Insurance Agency), a licensed agency and subsidiary of Ford Motor Company.

Comparisons based on 2009 competitive models (Pickup class is Full-size Pickups over 8500 lbs. GVWR; Chassis Cab class is Traditional Chassis Cab trucks under 22,000 lbs. GVWR), publicly available information and Ford certification data at time of release. Some features discussed may be optional. Vehicles shown may contain optional and aftermarket upfit equipment. Features shown may be offered only in combination with other options or subject to additional ordering requirements or limitations. Dimensions and capability ratings shown may vary due to optional features and/or production variability. Following release of the PDF, certain changes in standard equipment, options and the like, or product delays may have occurred which would not be included in these pages. Your Ford Dealer is the best source for up-to-date information. Ford Division reserves the right to change product specifications at any time without incurring obligations. Body manufacturers are responsible for compliance certification of the completed vehicle. The Ford New Vehicle Limited Warranty and any government certification made by Ford shall cover only the vehicle as manufactured by Ford and shall not extend to any addition, modification or change of or to the vehicle by the Ford Authorized Pool Account.

EXTERIOR COLORS

COLORS



	Interior Colors		Two-Tone Accent Colors (Pickups Only)	
XL				
Oxford White	●	●		
Dark Blue Pearl Metallic	●	●		
Vermillion Red	●	●		
Forest Green Metallic	●	●		
Ingot Silver Metallic		●		
Sterling Grey Metallic		●		
Black	●	●		
XLT				
Oxford White	●	●		
Dark Blue Pearl Metallic	●	●		
Vermillion Red	●	●		
Royal Red Metallic	●	●		
Pueblo Gold Metallic	●	●		
Forest Green Metallic	●	●		
Ingot Silver Metallic		●		
Sterling Grey Metallic		●		
Black	●	●		
LARIAT				
Oxford White	●	●	●	■ ■
Dark Blue Pearl Metallic	●	●	●	■ ■
Vermillion Red	●	●	●	
Royal Red Metallic	●	●	●	■ ■
Pueblo Gold Metallic	●	●	●	
Forest Green Metallic	●	●	●	■ ■
Ingot Silver Metallic		●	●	
Sterling Grey Metallic		●	●	
White Platinum Metallic Tri-Coat ¹	●	●	●	■
Black	●	●	●	■ ■

INTERIORS:
 ● Camel ● Medium Stone ● Ebony ● Chaparral

TWO-TONE ACCENT COLORS:
 ■ Pueblo Gold Metallic ■ Ingot Silver Metallic
 ■ Sterling Grey Metallic ■ Tuxedo Black Metallic

¹Tri-Coat paint is an additional-cost option and other restrictions may apply.

Colors shown are representative only. Not all colors are available on all models. See your dealer for actual paint/trim options.

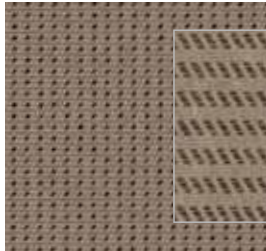
NOTE: Pueblo Gold Two-Tone only available with Camel interior. Ingot Silver Two-Tone only available with Medium Stone interior.

INTERIOR

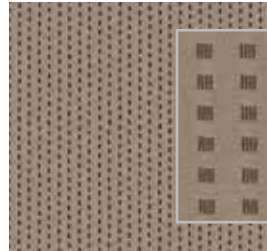
FABRICS & TRIM



HD Vinyl – Camel
Standard on XL



HD Cloth – Camel
Optional on XL



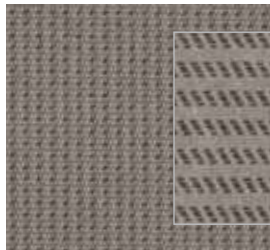
Premium Cloth – Camel
Standard on XLT



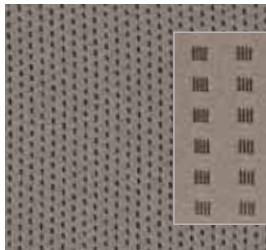
Leather – Camel
Standard on LARIAT, Optional on XLT



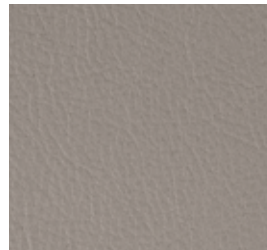
HD Vinyl – Medium Stone
Standard on XL



HD Cloth – Medium Stone
Optional on XL



Premium Cloth – Medium Stone
Standard on XLT



Leather – Medium Stone
Standard on LARIAT, Optional on XLT



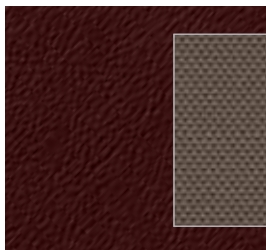
Leather – Ebony
Standard on LARIAT



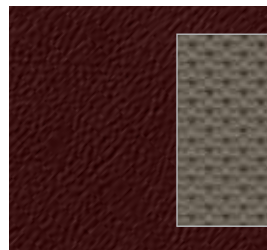
Leather – Chaparral
Standard on KING RANCH



Leather – Ebony
Standard on HARLEY-DAVIDSON Package



Cloth – Dark Rust/Medium Stone
Standard on Cabela's



Leather – Dark Rust/Medium Stone
Optional on Cabela's

	Interior Colors	Two-Tone Accent Colors (Pickups Only)
CABELA'S®		
Oxford White	●	■
Forest Green Metallic	●	■
Ingot Silver Metallic	●	■
Black	●	■
KING RANCH®		
Oxford White	●	■
Royal Red Metallic	●	■
Forest Green Metallic	●	■
White Platinum Metallic Tri-Coat ¹	●	■
Black	●	■

FORD HARLEY-DAVIDSON™ PACKAGE

Black	●	■
Black with Tuxedo Black Metallic Flames	●	■

INTERIORS:

● Medium Stone ● Ebony ● Chaparral

TWO-TONE ACCENT COLORS:

■ Pueblo Gold Metallic ■ Sterling Grey Metallic
■ Tuxedo Black Metallic

¹Tri-Coat paint is an additional-cost option and other restrictions may apply.

NOTE: Pueblo Gold Two-Tone only available with Camel interior. Ingot Silver Two-Tone only available with Medium Stone interior.

Fabric patterns and colors are subject to change or substitution without notice.