

Specs



DIMENSIONS & CAPACITIES

Exterior

Wheelbase	107.4"
Length	190.6"
Height	56.9"
Width – Excluding mirrors	72.2"
Width – Including mirrors	80.1"

Interior

Head room	38.7"/37.8"
Shoulder room	57.4"/56.5"
Hip room	54.0"/53.3"
Leg room	42.3"/37.1"

Capacities

	Fusion/Fusion Hybrid
Passenger volume (cu. ft.)	100.3/99.8
Luggage capacity (cu. ft.)	16.5/11.8
Total interior volume (cu. ft.)	116.8/111.6
Fuel capacity (gal.)	
FWD	17.5
AWD	16.5

HORSEPOWER, TORQUE AND 2010 EPA-ESTIMATED FUEL ECONOMY

2.5L Duratec® I-4 engine

Horsepower	175 @ 6000 rpm
Torque (lb.-ft.)	172 @ 4500 rpm
6-speed automatic (S)	23 mpg city/34 hwy.
6-speed manual (S)	22 mpg city/31 hwy.
6-speed automatic (SE, SEL)	22 mpg city/31 hwy.
6-speed manual (SE)	22 mpg city/29 hwy.

3.0L Duratec V6 FFV engine²

Horsepower	240 @ 6550 rpm
Torque (lb.-ft.)	223 @ 4300 rpm
6-speed SelectShift Automatic™	
FWD (SE, SEL)	18 mpg city/27 hwy.
AWD (SEL)	18 mpg city/25 hwy.

3.5L Duratec V6 engine

Horsepower	263 @ 6250 rpm
Torque (lb.-ft.)	249 @ 4500 rpm
6-speed SelectShift Automatic	
FWD (Sport)	18 mpg city/27 hwy.
AWD (Sport)	17 mpg city/24 hwy.

2.5L iVCT Atkinson-cycle I-4 engine with Permanent-Magnet AC-synchronous electric motor

Net horsepower	191
Electronically controlled Continuously Variable Transmission (eCVT)	41 mpg city/36 hwy.

STANDARD

Mechanical

Front-wheel drive (FWD)
4-wheel disc Anti-lock Brake System (ABS)
Power rack-and-pinion steering
Stabilizer bars – 24-mm front and 16-mm rear (17-mm rear on V6)
Suspension – Front: independent Short- and Long-Arm
Suspension – Rear: multilink independent

Safety & Security

Personal Safety System™ for driver and front passenger includes dual-stage front airbags ³ , safety belt pretensioners, safety belt energy-management retractors, safety belt usage sensors, driver-seat position sensor, crash severity sensor, restraint control module and Front-Passenger Sensing System
Front-seat side airbags ³
2-row side-curtain airbags ³
3-point safety belts for all seating positions
AdvanceTrac® electronic stability control ⁴ with Brake-Actuated Traction Control
Anti-theft perimeter alarm
Battery saver
Belt-Minder® front safety belt reminder
Child-safety rear door locks
Emergency in-trunk release
Illuminated entry
LATCH – Lower anchors and tether anchors for child-safety seats
Remote keyless entry with integrated keyhead transmitters (2)
SecuriLock® passive anti-theft ignition system
Side-intrusion door beams
SOS Post-Crash Alert System™ flashes hazard lights and sounds horn after airbag deployment or safety belt pretensioner activation in certain collisions ⁵
Tire Pressure Monitoring System (excludes spare)

Seating

2-way manual front-passenger seat
5-passenger seating
60/40 split-folding spring-assisted rear seat (non-Hybrid only)
Rear-seat fold-down center armrest with beverage holders (non-Hybrid only)

Interior

6 beverage holders (4 in Hybrid)
12-volt power points (2)
Accessory delay for power features
Auxiliary audio input jack in center console
Cabin air filter
Dual sliding sun visors with mirrors
Full center console with armrest and two-tiered storage
Grocery bag hooks in trunk
In-dash storage compartment
Message center with trip computer
Overhead console with dome and map lights (not available with moonroof)
Power door locks
Power trunk release
Power windows with one-touch-up/-down driver-window feature
Tilt/telescoping steering column

Exterior

Bright-chrome 3-bar grille
Easy Fuel™ capless fuel-filler system
Power sideview mirrors
Quad-beam halogen headlamps
Solar-tinted glass
Speed-sensitive windshield wipers

New Vehicle Limited Warranty. We want your Ford Fusion or Fusion Hybrid ownership experience to be the best it can be. So under this warranty, your new vehicle comes with 3-year/36,000-mile Bumper-to-Bumper Coverage, 5-year/60,000-mile Powertrain Warranty Coverage, 5-year/50,000-mile Safety Restraint Coverage, and 5-year/unlimited-mile Corrosion (Perforation) Coverage – all with no deductible. Fusion Hybrid is also covered by an 8-year/100,000-mile Hybrid Limited Warranty.⁶ Please ask your Ford Dealer for copies of these limited warranties.

Roadside Assistance covers your vehicle for 5 years or 60,000 miles, so you have the security of knowing that help may be only a phone call away should you run out of fuel, lock yourself out of the vehicle, or need towing. Your Ford Dealer can provide complete details on all of these advantages.

Ford Credit. Get the ride you want. Whether you plan to lease or finance, you'll find the choices that are right for you at Ford Credit. Ask your Ford Dealer for details or check us out at fordcredit.com.

Ford Extended Service Plan. For a purchase or lease, the Ford Extended Service Plan (ESP) gives you "Peace-of-Mind" protection designed to cover key vehicle components and protect you from the cost of unexpected repairs. Ask your dealer for a Ford ESP, the only service contract backed exclusively by Ford and honored at all Ford Lincoln Mercury dealerships.

Insurance Services. Get Ford Motor Company quality in your auto insurance. Our program offers industry-leading benefits and competitive rates. Call 1-877-367-3847, or visit us at fordvip.com for a no-obligation quote. Insurance offered by American Road Services Company (In CA, American Road Insurance Agency), a licensed agency and subsidiary of Ford Motor Company.

Comparisons based on 2009 competitive models (Midsize Sedan class), publicly available information and Ford certification data at time of release. Some features discussed may be optional. Vehicles shown may contain optional equipment. Features shown may be offered only in combination with other options or subject to additional ordering requirements or limitations. Dimensions shown may vary due to optional features and/or production variability. Following release of this PDF, certain changes in standard equipment, options and the like, or product delays may have occurred which would not be included in these pages. Your Ford Dealer is the best source for up-to-date information. Ford Division reserves the right to change product specifications at any time without incurring obligations.

Sony is a registered trademark of Sony Corporation.
Dolby and Pro Logic are registered trademarks of Dolby Laboratories.

© 2009 Ford Motor Company

10FUSWEBPDF

¹36.7" on Fusion Hybrid.

²Fuel economy when operating on E85 will yield different values than gasoline. See *Fuel Economy Guide* for more information.

³Always wear your safety belt and secure children in the rear seat.

⁴Remember that even advanced technology cannot overcome the laws of physics. It's always possible to lose control of a vehicle due to inappropriate driver input for the conditions.

⁵SOS hardware may become damaged or the battery may lose power in a crash, which could prevent operation.

Not all crashes will activate an airbag or safety belt pretensioner.

⁶10-year/150,000-mile Hybrid Battery Limited Warranty in California, Connecticut, Maine, Massachusetts, New Jersey, New York, Rhode Island and Vermont. See dealer for details.



FUSION S

Equipped with all standard features, plus:

Rapid Spec 100A

2.5L DOHC Duratec® I-4 engine
6-speed manual transmission
16" 5-spoke painted-aluminum wheels
P205/60R16 all-season tires
4-way manual driver seat
Single-zone manual air conditioning
AM/FM stereo/single-CD player with MP3 capability and 4 speakers
Manual day/night rearview mirror
Single exhaust

Available Option

6-speed automatic transmission

FUSION SE

Equipped with all standard S features, plus:

Rapid Spec 200A

17" 5-spoke-design steel wheels with silver-painted covers
P225/50R17 all-season tires
6-way power driver seat with manual lumbar
Fold-flat front-passenger seat
Front and rear carpeted floor mats
Driver and front-passenger seatback map pockets
Dual sliding sun visors with illuminated mirrors
AM/FM stereo/single-CD player with MP3 capability and 6 speakers
SIRIUS® Satellite Radio ¹ with 6-month subscription
Single exhaust with dual chrome tips
Body-color, power sideview mirrors
Bright beltline
Fog lamps

Available Option Groups

Rapid Spec 201A: Ford SYNC® voice-activated communications and entertainment system,² and auto-dimming rearview mirror with microphone and compass

Rapid Spec 202A: Sun & SYNC Package – Power tilt-and-slide moonroof, auto-dimming rearview mirror with microphone and compass, and Ford SYNC

Available Options

3.0L V6 FFV engine with 6-speed SelectShift Automatic™ transmission
6-speed automatic transmission (2.5L I-4)
Rear spoiler
Reverse Sensing System
White Platinum Metallic Tri-Coat paint

FUSION SEL

Equipped with all standard SE features, plus:

Rapid Spec 300A

6-speed automatic transmission
17" 5-spoke machined-aluminum wheels
P225/50R17 V-rated all-season tires
8-way power driver seat
6-way power front-passenger seat
Leather-trimmed seats
Heated front seats
Ambient Lighting
Auto-dimming rearview mirror with microphone and compass
Dual-zone Electronic Automatic Temperature Control
Steering wheel-mounted cruise and audio controls
Ford SYNC voice-activated communications and entertainment system
Automatic headlamps
SecuriCode™ keyless-entry keypad
Body-color, power, heated sideview mirrors with security approach lamps

Available Option Groups

Rapid Spec 301A: Moon & Tune Package – Power tilt-and-slide moonroof, and Sony® Audio System with DAEP 5.1 Surround Sound, AM/FM stereo/6-disc in-dash CD changer, MP3 capability, 12 speakers and 390 watts

Rapid Spec 302A: Moon & Tune Package + Driver's Vision Package – BLIS® (Blind Spot Information System) with Cross Traffic Alert and Rear View Camera + Reverse Sensing System

Available Options

3.0L V6 FFV engine with 6-speed SelectShift Automatic transmission
18" machined-aluminum wheels with painted pockets, P225/45R18 V-rated performance tires and sport-tuned suspension
All-Wheel Drive (3.0L V6 only)
Hard drive-based, voice-activated Navigation System featuring SIRIUS Travel Link™ ³ (with complimentary 6-month subscription) and nearly 10 gigabytes of digital storage for pictures and music; includes Sony Audio System with DAEP 5.1 Surround Sound, AM/FM stereo/single-CD/DVD, MP3 capability, 12 speakers and 390 watts ⁴
Rear spoiler
Reverse Sensing System
White Platinum Metallic Tri-Coat paint

FUSION SPORT

Equipped with all standard SE features, plus:

Rapid Spec 400A

3.5L V6 engine with 6-speed SelectShift Automatic transmission
18" 5-spoke painted-aluminum wheels
P225/45R18 V-rated all-season tires
8-way power driver seat
Auto-dimming rearview mirror with compass and microphone
Ford SYNC voice-activated communications and entertainment system
Leather-trimmed seats available with Charcoal Black, Red or Blue seat and door-trim Inserts
Leather-wrapped steering wheel
Steering wheel-mounted cruise and audio controls
Unique appliques on center stack and dash available in Slate, Red or Blue
Chrome-accented exterior trim
Dual chrome exhaust tips
Rear spoiler
Side rocker moldings
Sport-tuned suspension

Available Option Groups

Rapid Spec 401A: Moon & Tune Package

Rapid Spec 402A: Moon & Tune Package + Electronics Package – BLIS (Blind Spot Information System) with Cross Traffic Alert, Rear View Camera, 6-way power passenger seat, heated front seats, Dual-zone Electronic Automatic Temperature Control, Ambient Lighting, automatic headlamps, heated sideview mirrors with security approach lamps, and SecuriCode keyless-entry keypad + Reverse Sensing System

Available Options

All-Wheel Drive (AWD)
Hard drive-based, voice-activated Navigation System featuring SIRIUS Travel Link (with complimentary 6-month subscription) and nearly 10 gigabytes of digital storage for pictures and music; includes Sony Audio System with DAEP 5.1 Surround Sound, AM/FM stereo/single-CD/DVD, MP3 capability, 12 speakers and 390 watts ⁵
Reverse Sensing System

FUSION HYBRID

Equipped with all standard I-4 SEL features, plus:

Rapid Spec 500A

2.5L IVCT I-4 Atkinson-cycle engine with Permanent-Magnet AC-synchronous electric motor
Electronically controlled Continuously Variable Transmission (eCVT)
275-volt sealed nickel-metal-hydride (NiMH) battery
17" 15-spoke painted-aluminum wheels
P225/50R17 V-rated all-season tires
110-volt power point
SmartGauge™ with EcoGuide instrument cluster with 2 configurable LCD screens and message center
AM/FM stereo/6-disc in-dash CD changer, MP3 capability and 6 speakers
Driver knee airbag ⁶
Fixed rear seat
Eco-friendly cloth seating
Regenerative Braking System
Reverse Sensing System

Available Option Groups

Rapid Spec 501A: Moon & Tune Package + Driver's Vision Package

Rapid Spec 502A: Moon & Tune Package + Driver's Vision Package + Leather-trimmed seats with heated front seats + Hard drive-based, voice-activated Navigation System featuring SIRIUS Travel Link (with complimentary 6-month subscription) and nearly 10 gigabytes of digital storage for pictures and music; includes Sony Audio System with DAEP 5.1 Surround Sound, AM/FM stereo/single-CD/DVD, MP3 capability, 12 speakers and 390 watts

Available Options

Hard drive-based, voice-activated Navigation System featuring SIRIUS Travel Link (with complimentary 6-month subscription) and nearly 10 gigabytes of digital storage for pictures and music; includes Sony Audio System with DAEP 5.1 Surround Sound, AM/FM stereo/single-CD/DVD, MP3 capability, 12 speakers and 390 watts ⁴
Leather-trimmed seats with heated front seats ⁴
White Platinum Metallic Tri-Coat paint

¹Service not available in Alaska or Hawaii. ²SIRIUS, the SIRIUS dog logo and related marks are trademarks of SIRIUS Satellite Radio Inc. ³Driving while distracted can result in loss of vehicle control. Only use mobile phones and other devices, even with voice commands, when it is safe to do so. ⁴Real-time traffic monitoring available in select markets. Not available in Alaska or Hawaii. Some features are unavailable while driving. ⁵Requires Moon & Tune Package + Driver's Vision Package. ⁶Requires Moon & Tune Package + Electronics Package. ⁷Always wear your safety belt and secure children in the rear seat.

Exterior COLORS



Sangria Red Metallic



Sport Blue Metallic



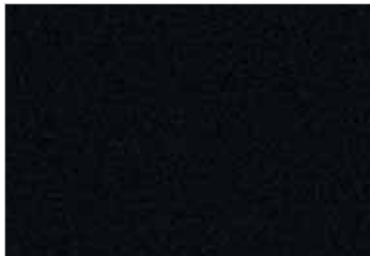
Sterling Grey Metallic



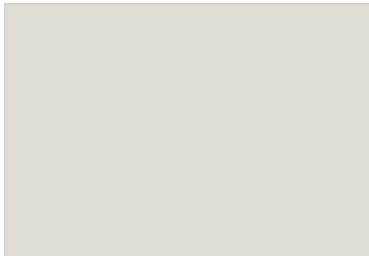
Smokestone Metallic



Light Ice Blue Metallic



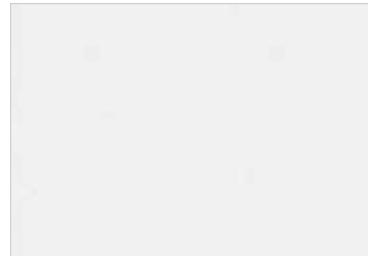
Tuxedo Black Metallic



White Suede



Atlantis Green Metallic



White Platinum Metallic Tri-Coat



Brilliant Silver Metallic

S	Interior Colors
Sangria Red Metallic	●
Smokestone Metallic	●
Tuxedo Black Metallic	●
White Suede	●
Brilliant Silver Metallic	●

SE	Interior Colors
Sangria Red Metallic	● ●
Sport Blue Metallic	●
Sterling Grey Metallic	● ●
Smokestone Metallic	● ● ●
Tuxedo Black Metallic	● ●
White Suede	●
Atlantis Green Metallic	● ● ●
White Platinum Metallic Tri-Coat	● ● ● ●
Brilliant Silver Metallic	● ●

SEL	Interior Colors
Sangria Red Metallic	● ● ●
Sport Blue Metallic	●
Sterling Grey Metallic	● ●
Smokestone Metallic	● ● ●
Tuxedo Black Metallic	● ● ●
White Suede	●
Atlantis Green Metallic	● ● ●
White Platinum Metallic Tri-Coat	● ● ● ●
Brilliant Silver Metallic	● ●

Sport	Interior Colors
Sangria Red Metallic	● ●
Sport Blue Metallic	● ●
Tuxedo Black Metallic	● ●
Brilliant Silver Metallic	● ●

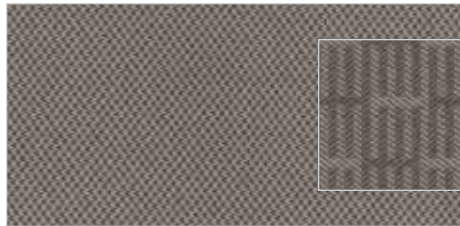
Hybrid	Interior Colors
Sterling Grey Metallic	● ●
Light Ice Blue Metallic	● ●
Tuxedo Black Metallic	● ●
Atlantis Green Metallic	● ●
White Platinum Metallic Tri-Coat	● ●
Brilliant Silver Metallic	● ●

INTERIORS: ● Medium Light Stone ● Charcoal Black
● Camel ● Sport Red ● Sport Blue

Ford uses clearcoat paint for beauty and protection. Colors shown are representative only. Not all colors are available on all models. See your dealer for actual paint/trim options.

Interior

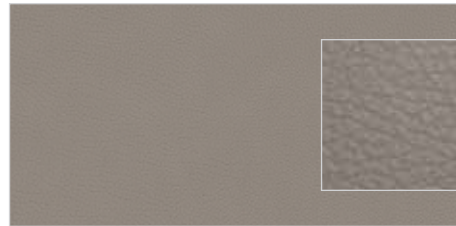
COLORS



Cloth - Medium Light Stone with Medium Light Stone inserts
Standard on S and SE



Brushed-Aluminum accents



Leather - Medium Light Stone with Medium Light Stone inserts
Standard on SEL, Available on Hybrid



Black Carbon Weave accents
SEL



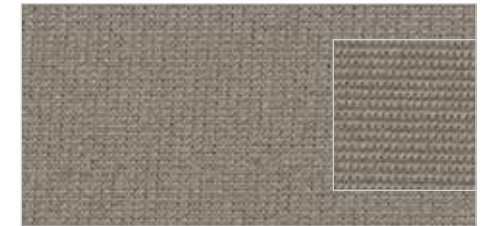
Silver Carbon Weave accents
Hybrid



Leather - Charcoal Black with Charcoal Black inserts
Standard on Sport



Polished Slate accents



Cloth - Medium Light Stone with Medium Light Stone inserts
Standard on Hybrid



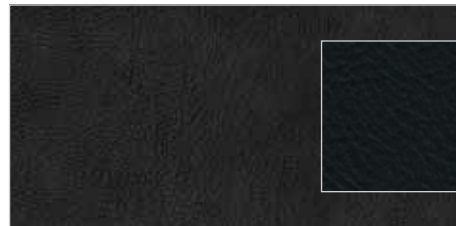
Silver Carbon Weave accents



Cloth - Charcoal Black with Charcoal Black inserts
Standard on SE



Brushed-Aluminum accents



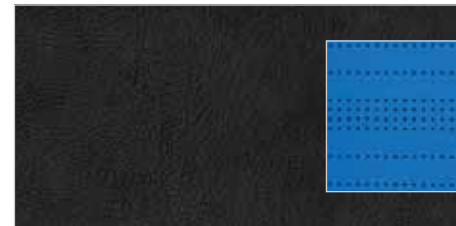
Leather - Charcoal Black with Charcoal Black inserts
Standard on SEL, Available on Hybrid



Black Carbon Weave accents
SEL



Silver Carbon Weave accents
Hybrid



Leather - Charcoal Black with Sport Blue inserts
Standard on Sport



Blue Racer accents



Cloth - Charcoal Black with Charcoal Black inserts
Standard on Hybrid



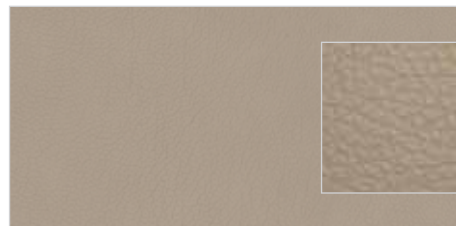
Silver Carbon Weave accents



Cloth - Camel with Camel inserts
Standard on SE



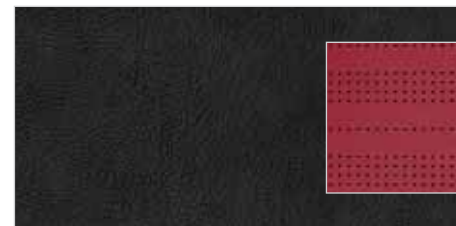
Brushed-Aluminum accents



Leather - Camel with Camel inserts
Standard on SEL



Woodgrain accents



Leather - Charcoal Black with Sport Red inserts
Standard on Sport



Cherry Red accents